



# PROJECTORS AND WALLWASHER PROJECTORS

# BCN50

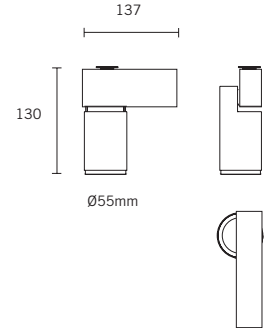
Aluminium projector with LED technology,  
with a three-phase track adaptor or with a base.  
For wall or ceiling. Driver included.

Efficiency (+/-85Lm/W)  
High colour consistency (MacAdams 3)  
Excellent thermal performance COB LED technology.  
Working life +80% flux after 40.000 h.  
\*Under request (G 827)



06504 -						
	Colour	CRI /Temp.	Angle	Lamp	Dimmable	Class
0	White	G 827*	2 20°	0 600LM / 7W	R	I
1	Black	C 830	4 40°			
2	Grey	N 840	6 60°			
P	Polish. Al.					

380g IP 20 90° 355° DRIVER 230V Base LED



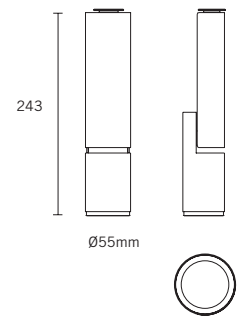
06505 -						
	Colour	CRI /Temp.	Angle	Lamp	Dimmable	Class
0	White	G 827*	2 20°	0 600LM / 7W	R	I
1	Black	C 830	4 40°			
2	Grey	N 840	6 60°			
P	Polish. Al.					

410g IP 20 90° 355° DRIVER 230V Track adaptor LED



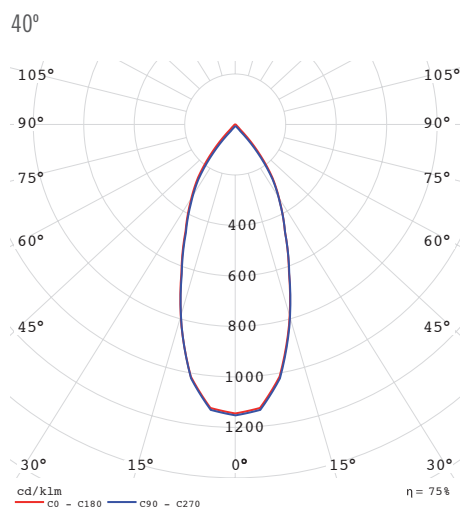
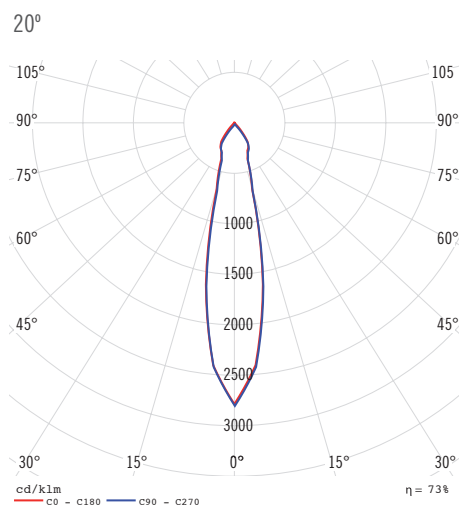
06506 -						
	Colour	CRI /Temp.	Angle	Lamp	Dimmable	Class
0	White	G 827*	2 20°	0 600LM / 7W	R	I
1	Black	C 830	4 40°			
2	Grey	N 840	6 60°			
P	Polish. Al.					

440g IP 20 90° 355° DRIVER 230V Base LED



06507 -						
	Colour	CRI /Temp.	Angle	Lamp	Dimmable	Class
0	White	G 827*	2 20°	0 600LM / 7W	R	I
1	Black	C 830	4 40°			
2	Grey	N 840	6 60°			
P	Polish. Al.					

470g IP 20 90° 355° DRIVER 230V Track adaptor LED



7W 20°

0.5	0.20	0.20	E(0°)	10362
			E(C90)	4922
			E(C0)	4909
1.0	0.40	0.40	E(0°)	2590
			E(C90)	1231
			E(C0)	1227
1.5	0.60	0.59	E(0°)	1151
			E(C90)	547
			E(C0)	545
2.0	0.80	0.79	E(0°)	648
			E(C90)	308
			E(C0)	307
2.5	1.00	0.99	E(0°)	414
			E(C90)	197
			E(C0)	196
3.0	1.20	1.19	E(0°)	288
			E(C90)	137
			E(C0)	136

— c0 - C180 (22.4°)

— c90 - C270 (22.6°)

7W 40°

0.5	0.40	0.39	E(0°)	3114
			E(C90)	1255
			E(C0)	1261
1.0	0.79	0.79	E(0°)	779
			E(C90)	314
			E(C0)	315
1.5	1.19	1.18	E(0°)	346
			E(C90)	139
			E(C0)	140
2.0	1.58	1.58	E(0°)	195
			E(C90)	78
			E(C0)	79
2.5	1.98	1.97	E(0°)	125
			E(C90)	50
			E(C0)	50
3.0	2.38	2.36	E(0°)	87
			E(C90)	35
			E(C0)	35

— c0 - C180 (43.0°)

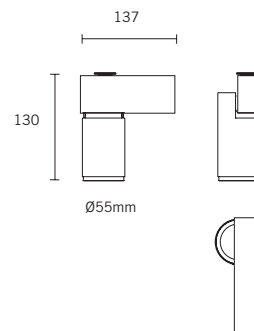
— c90 - C270 (43.2°)

# BCN50

Aluminium projector for halogen lamps with a three-phase track adaptor or with a base for wall or ceiling. Electronic equipment enclosed.



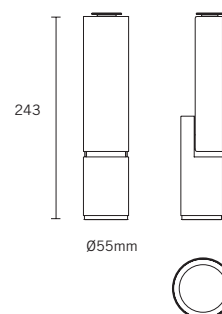
06500 -					
Colour		Lamp		Class	
0	White	M	Gx5,3 QR-CBC51 12V MAX.50W	I	
1	Black	G	GU10		
2	Grey				
P	Polish. Al.				
380g	IP 20	90°	355°	230V	Base



06501 -					
Colour		Lamp		Class	
0	White	M	Gx5,3 QR-CBC51 12V MAX.50W	I	
1	Black	G	GU10		
2	Grey				
P	Polish. Al.				
410g	IP 20	90°	355°	230V	Track adaptor



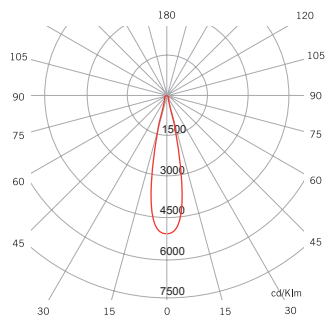
06502 -					
Colour		Lamp		Class	
0	White	M	Gx5,3 QR-CBC51 12V MAX.50W	I	
1	Black	G	GU10		
2	Grey				
P	Polish. Al.				
440g	IP 20	90°	355°	230V	Base



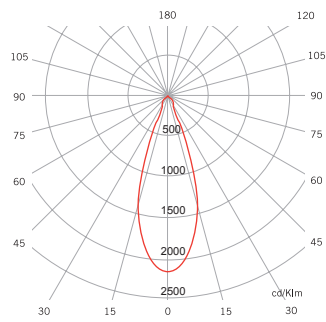
06503 -					
Colour		Lamp		Class	
0	White	M	Gx5,3 QR-CBC51 12V MAX.50W	I	
1	Black	G	GU10		
2	Grey				
P	Polish. Al.				
470g	IP 20	90°	355°	230V	Track adaptor

**M** Gx5,3 QR-CBC51

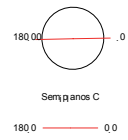
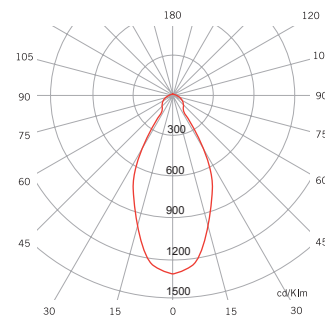
24° Ángulo Gamma



38° Ángulo Gamma

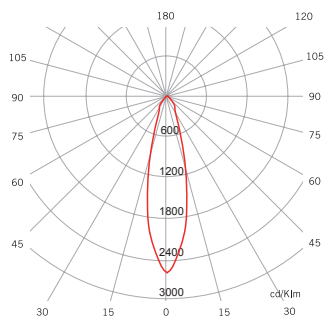


60° Ángulo Gamma

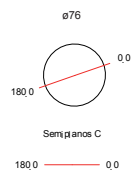
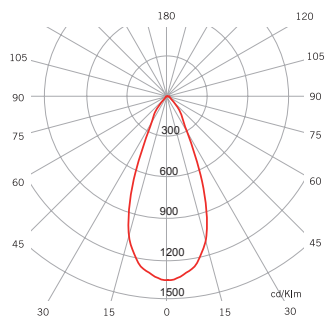


**G** GU10

25° Ángulo Gamma



50° Ángulo Gamma

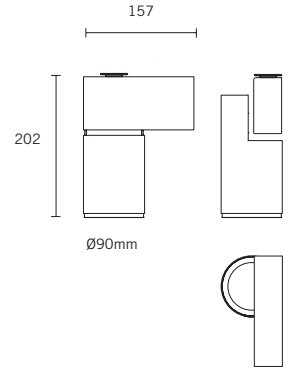




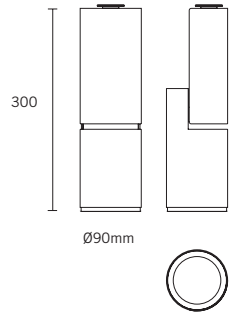
06512 - SPECIAL FOOD / RETAIL						
Colour	CRI /Temp.	Angle	Lamp	Dali	Class	
0 White	B Bakery	1 15°	3 2000LM	R	I	Base LED
1 Black	M Meat	3 36°	4 3000LM *			
2 Grey	P Fish	6 60°				
P Polish. Al.	V Fruit					
	R Retail					



06513 - SPECIAL FOOD / RETAIL						
Colour	CRI /Temp.	Angle	Lamp	Dali	Class	
0 White	B Bakery	1 15°	3 2000LM	R	I	Track adaptor LED
1 Black	M Meat	3 36°	4 3000LM *			
2 Grey	P Fish	6 60°				
P Polish. Al.	V Fruit					
	R Retail					

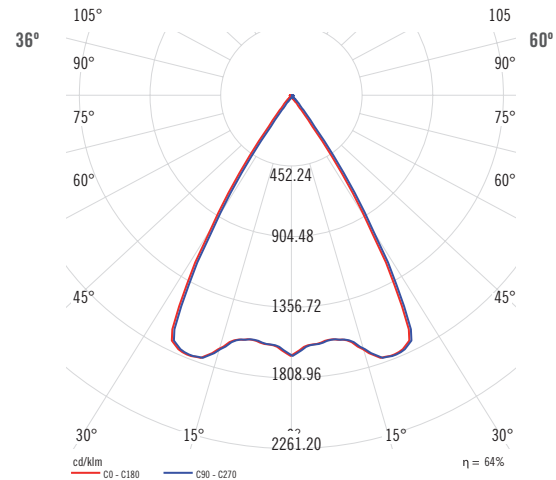
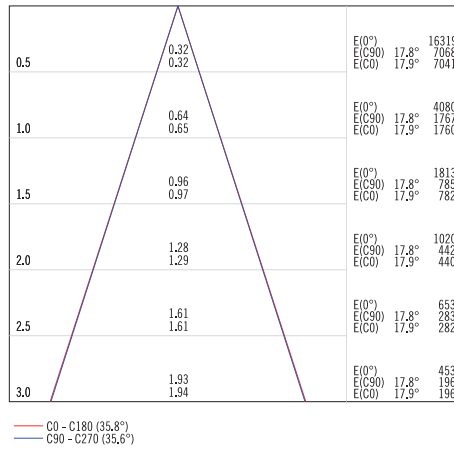
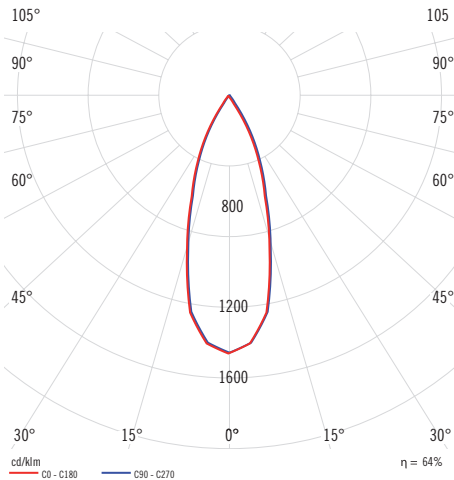


06514 - SPECIAL FOOD / RETAIL						
Colour	CRI /Temp.	Angle	Lamp	Dali	Class	
0 White	B Bakery	1 15°	3 2000LM	R	I	Base LED
1 Black	M Meat	3 36°	4 3000LM *			
2 Grey	P Fish	6 60°				
P Polish. Al.	V Fruit					
	R Retail					



06515 - SPECIAL FOOD / RETAIL						
Colour	CRI /Temp.	Angle	Lamp	Dali	Class	
0 White	B Bakery	1 15°	3 2000LM	R	I	Track adaptor LED
1 Black	M Meat	3 36°	4 3000LM *			
2 Grey	P Fish	6 60°				
P Polish. Al.	V Fruit					
	R Retail					

(\* ) Excepto Meat.





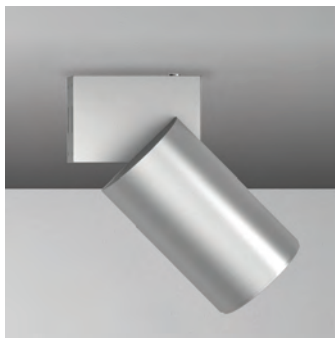




# BCN120

Aluminium projector with LED technology, with a three-phase adaptor or with a base for wall or ceiling. Driver included. On request available with other DALI track adaptors.

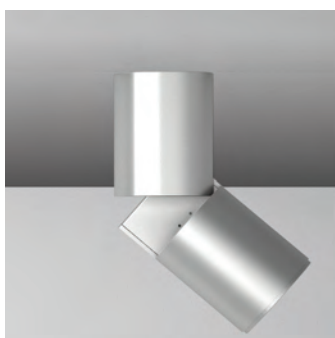
High efficiency (+/-110lm/W)  
 High Colour consistency (MacAdams 3)  
 Excellent thermal performance COB LED technology.  
 Working life +80% flux after 40.000 h  
 \*Under request (G 827 / H 927)



06532 -						
Colour	CRI /Temp.	Angle	Lamp	Dali	Class	
0 White	G 827*	1 15°	2 1500LM / 16W	R	I	
1 Black	C 830	3 36°	3 2000LM / 18W			
2 Grey	N 840	6 60°	4 3000LM / 25W			
P Polish. Al.	E 930		5 4000LM / 31W			
	H 927*					
	F 940					



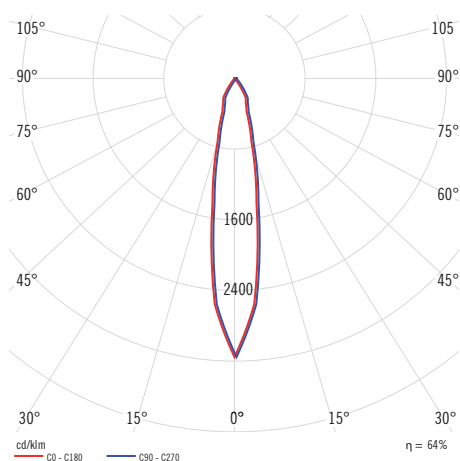
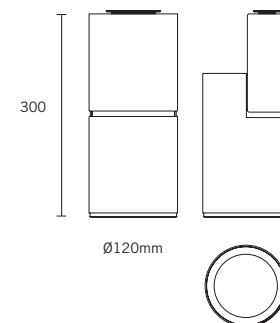
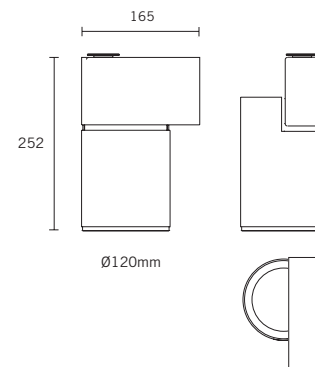
06533 -						
Colour	CRI /Temp.	Angle	Lamp	Dali	Class	
0 White	G 827*	1 15°	2 1500LM / 16W	R	I	
1 Black	C 830	3 36°	3 2000LM / 18W			
2 Grey	N 840	6 60°	4 3000LM / 25W			
P Polish. Al.	E 930		5 4000LM / 31W			
	H 927*					
	F 940					



06534 -						
Colour	CRI /Temp.	Angle	Lamp	Dali	Class	
0 White	G 827*	1 15°	2 1500LM / 16W	R	I	
1 Black	C 830	3 36°	3 2000LM / 18W			
2 Grey	N 840	6 60°	4 3000LM / 25W			
P Polish. Al.	E 930		5 4000LM / 31W			
	H 927*					
	F 940					



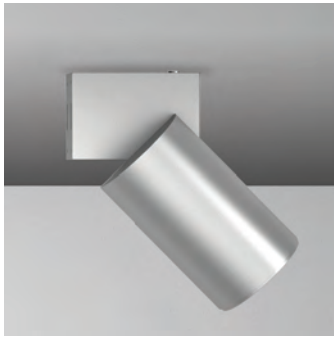
06535 -						
Colour	CRI /Temp.	Angle	Lamp	Dali	Class	
0 White	G 827*	1 15°	2 1500LM / 16W	R	I	
1 Black	C 830	3 36°	3 2000LM / 18W			
2 Grey	N 840	6 60°	4 3000LM / 25W			
P Polish. Al.	E 930		5 4000LM / 31W			
	H 927*					
	F 940					



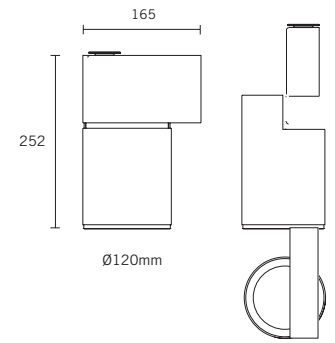
Beam Diameter (mm)	Beam Angle (°)	Beam Diameter (mm)	Beam Angle (°)	E(0°)	E(C90)	E(C0)	15°
0.5	15°	0.5	15°	45865	22377	22254	0.16
1.0	15°	1.0	15°	11466	5594	5564	0.32
1.5	15°	1.5	15°	5096	2486	2473	0.49
2.0	15°	2.0	15°	2867	1399	1391	0.65
2.5	15°	2.5	15°	1835	895	890	0.81
3.0	15°	3.0	15°	1274	622	618	0.97

C0 - C180 (18.6°)  
 C90 - C270 (18.4°)

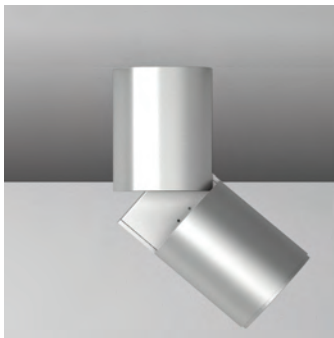
(\*) Except meat.



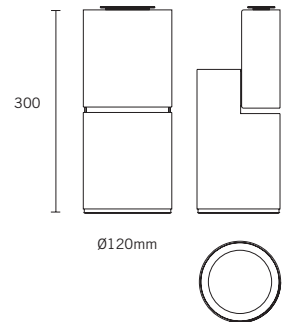
06532 - SPECIAL FOOD / RETAIL						
Colour	CRI /Temp.	Angle	Lamp	Dali	Class	
0 White	B Bakery	1 15°	3 2000LM	R	I	
1 Black	M Meat	3 36°	4 3000LM (*)			
2 Grey	P Fish	6 60°				
P Polish. Al.	V Fruit					
	R Retail					



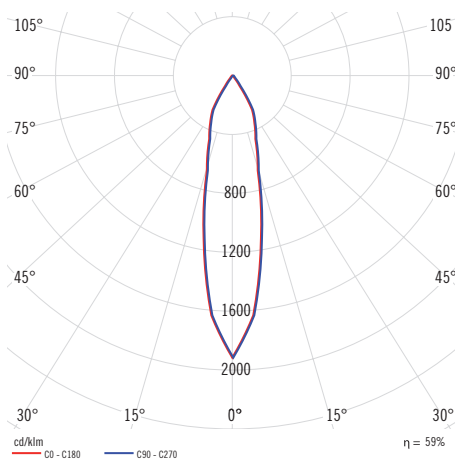
06533 - SPECIAL FOOD / RETAIL						
Colour	CRI /Temp.	Angle	Lamp	Dali	Class	
0 White	B Bakery	1 15°	3 2000LM	R	I	
1 Black	M Meat	3 36°	4 3000LM (*)			
2 Grey	P Fish	6 60°				
P Polish. Al.	V Fruit					
	R Retail					



06534 - SPECIAL FOOD / RETAIL						
Colour	CRI /Temp.	Angle	Lamp	Dali	Class	
0 White	B Bakery	1 15°	3 2000LM	R	I	
1 Black	M Meat	3 36°	4 3000LM (*)			
2 Grey	P Fish	6 60°				
P Polish. Al.	V Fruit					
	R Retail					

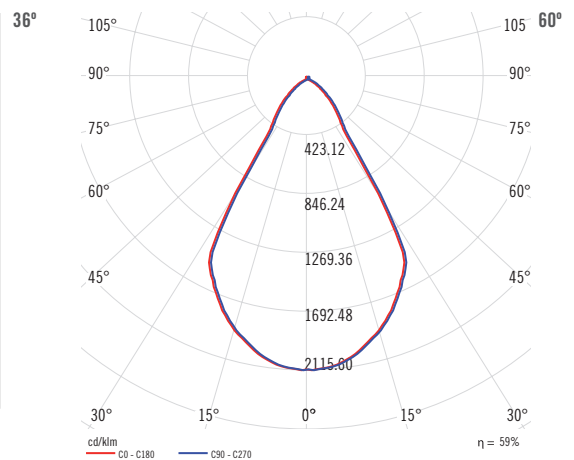


06535 - SPECIAL FOOD / RETAIL						
Colour	CRI /Temp.	Angle	Lamp	Dali	Class	
0 White	B Bakery	1 15°	3 2000LM	R	I	
1 Black	M Meat	3 36°	4 3000LM (*)			
2 Grey	P Fish	6 60°				
P Polish. Al.	V Fruit					
	R Retail					



Beam Angle	Light Intensity (cd/klm)	E(0°)	E(C90)	E(C0)
0.5	0.21 / 0.21	27853	13135	13066
1.0	0.41 / 0.42	6963	3284	3266
1.5	0.62 / 0.63	3095	1459	1452
2.0	0.83 / 0.84	1741	821	817
2.5	1.04 / 1.04	1114	525	523
3.0	1.24 / 1.25	774	365	363

Legend: — C0 - C180 (23.6°) — C90 - C270 (23.4°)





JACK & JONES

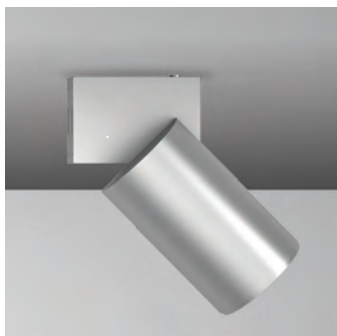
ORIGINALS  
BY JACK & JONES





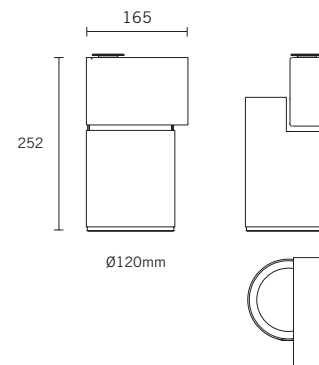
# BCN120

Aluminium projector for LED lamps to 230 V, with a three-phase track adaptor or with a base for wall or ceiling. Lamp not included.



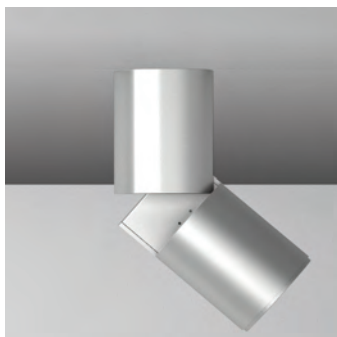
06524 -		Colour	Lamp	Class
0	White	G	GU10 (AR111 LED)	I
1	Black			
2	Grey			
P	Polish. Al.			

1500g  
 IP 20  
 90°  
 355°  
 230V  
 Base



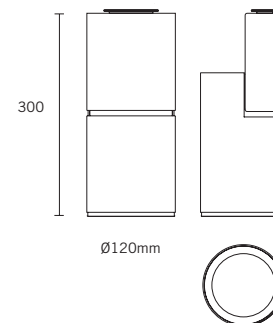
06525 -		Colour	Lamp	Class
0	White	G	GU10 (AR111 LED)	I
1	Black			
2	Grey			
P	Polish. Al.			

1530g  
 IP 20  
 90°  
 355°  
 230V  
 Track adaptor



06526 -		Colour	Lamp	Class
0	White	G	GU10 (AR111 LED)	I
1	Black			
2	Grey			
P	Polish. Al.			

1560g  
 IP 20  
 90°  
 355°  
 230V  
 Base

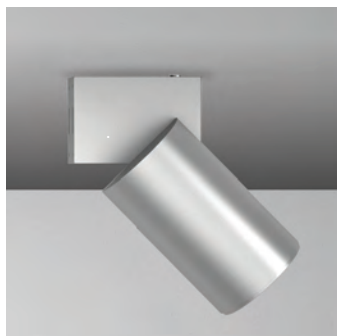


06527 -		Colour	Lamp	Class
0	White	G	GU10 (AR111 LED)	I
1	Black			
2	Grey			
P	Polish. Al.			

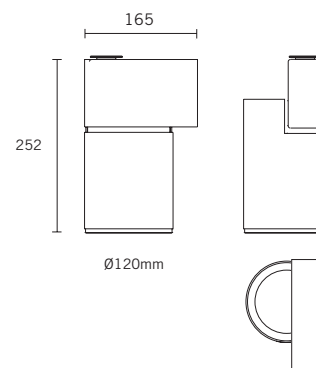
1590g  
 IP 20  
 90°  
 355°  
 230V  
 Track adaptor

# BCN120

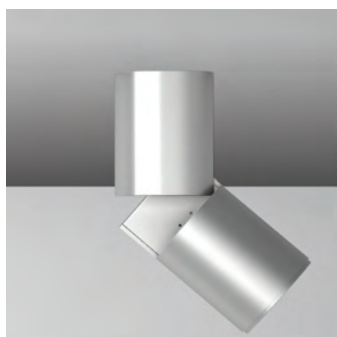
Aluminium projector for halogen lamps to 12 V with a three-phase track adaptor or with a base for wall or ceiling.



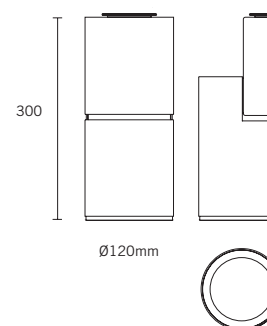
06528 -			
Colour	Lamp	Class	
0 White	Q R QR111 (MAX 60W)	III	
1 Black			
2 Grey			
P Polish. Al.			
1500g	IP 20	90° 355°	230V/12V
			Base



06529 -			
Colour	Lamp	Class	
0 White	Q R QR111 (MAX 60W)	III	
1 Black			
2 Grey			
P Polish. Al.			
1530g	IP 20	90° 355°	230V/12V
			Track adaptor



06530 -			
Colour	Lamp	Class	
0 White	Q R QR111 (MAX 60W)	III	
1 Black			
2 Grey			
P Polish. Al.			
1560g	IP 20	90° 355°	230V/12V
			Base



06531 -			
Colour	Lamp	Class	
0 White	Q R QR111 (MAX 60W)	III	
1 Black			
2 Grey			
P Polish. Al.			
1590g	IP 20	90° 355°	230V/12V
			Track adaptor

