

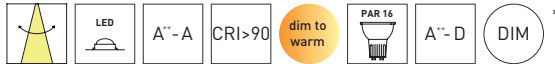
RENA

Einbaustrahler aus Aluminium, schwenkbar (2x30°), mit tiefer gesetztem Leuchtmittel:
 1) mit dim to warm LED 12,6 W, CRI>90, LED-Modul austauschbar, Driver bitte separat bestellen
 2) mit LED 9,3 W, 2700K oder 3000K, CRI>90, dimmbar, LED-Modul austauschbar, Driver bitte separat bestellen
 3) für GU10 LED- und Halogen-Leuchtmittel geeignet



Recessed downlight made of aluminium, adjustable (2x30°), with recessed lamp:

1) with dim to warm LED 12,6 W, CRI>90, LED module replaceable, please order driver separately
 2) with LED 9,3 W, 2700K or 3000K, CRI>90, dimmable, LED module replaceable, please order driver separately
 3) GU10 LED and halogen lamps are suitable



CODE	TYPE	COLOUR	LAMP	LUMEN*	POWER SUPPLY	H
D575-__	RENA	white	1x12,6W LED dim to warm 350mA	80-1175 lm	excl. driver	115 mm
D579-__	RENA	black	1x12,6W LED dim to warm 350mA	80-1175 lm	excl. driver	115 mm
D869-__	RENA	white	1x9,3W LED 2700K 500mA	860 lm	excl. driver	110 mm
D866-__	RENA	black	1x9,3W LED 2700K 500mA	860 lm	excl. driver	110 mm
D863-__	RENA	white	1x9,3W LED 3000K 500mA	880 lm	excl. driver	110 mm
D883-__	RENA	black	1x9,3W LED 3000K 500mA	880 lm	excl. driver	110 mm
D583	RENA	white	1xGU10 LED or 1x30W halogen	-	230 V	140 mm
D584	RENA	black	1xGU10 LED or 1x30W halogen	-	230 V	140 mm

H = Einbautiefe / recessed depth

BEAM ANGLE

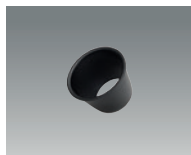
Bitte wählen Sie den Abstrahlwinkel aus: / Please choose the beam angle:



CODE	LED-MODULE	BEAM ANGLE
Dxxx-15	9,3 W / 12,6 W	15°
Dxxx-25	9,3 W / 12,6 W	25°
Dxxx-38	9,3 W / 12,6 W	38° (standard)
Dxxx-60	9,3 W / 12,6 W	60°

Dim to warm Information siehe S. 197
 Dim to warm information see page 197

ACCESSORIES



Snoot für RENA
 Snoot for RENA

CODE	TYPE	HxØ	COLOUR
D120	SNOOT	32xØ48 mm	white
D121	SNOOT	32xØ48 mm	black

Driver siehe Seite 195 ff. / Driver see page 195 ff.



Projekt: Hotel Waldruhe Kartitsch



Lichtplanung: Nataly Hofer / Foto: Eckli Raff