



# TYPHA

CALVI BRAMBILLA

La forma del modulo luminoso è quella della *Typha Latifolia*, nome botanico della bellissima pianta acquatica a forma di spiga. Ogni gambo in ottone naturale sboccia in una luce a LED racchiusa da un vetro borosilicato tubolare.

A seconda dell'effetto che si vuole ottenere e dello spazio da decorare è possibile scegliere tra sospensioni a una, tre o sei luci, applique o piantana a terra.

*The shape of the light module is inspired by the *Typha Latifolia*, the botanical name of this beautiful spiky water plant.*

*Each natural brass stem blooms in a LED light enclosed by tubular borosilicate glass. Depending on the desired effect and the space to decorate, it is possible to choose from pendant lamps with one, three or six lights, wall lamp or floor lamp.*

*on the left*

*Typha 285.03.ON*

**Custom Solution**

*Typha 285.03  
in Morocco finish*



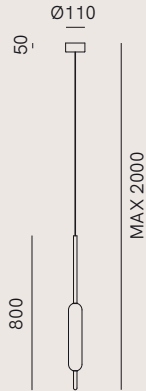
*Typha 285.02.ON detail*

*on the right  
Typha 285.05.ON*



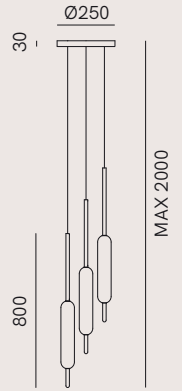


*Typha 285.04.ON*



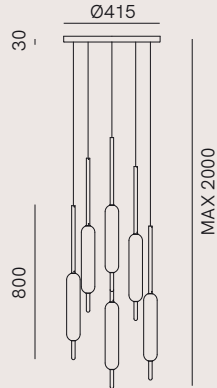
**285.01.ON**

LED 20W 2700K IP20  
Dimmerabile TRIAC / Dimmable TRIAC



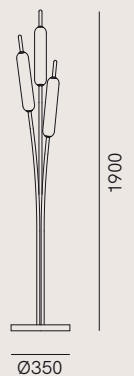
**285.02.ON**

LED 42W 2700K IP20  
Dimmerabile TRIAC - PUSH / Dimmable TRIAC - PUSH



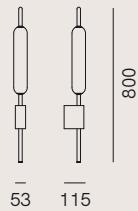
**285.03.ON**

LED 83W 2700K IP20  
Dimmerabile TRIAC - PUSH / Dimmable TRIAC - PUSH



**285.04.ON**

LED 42W 2700K IP20  
Dimmerabile / Dimmable



**285.05.ON**

LED 20W 2700K IP20  
Dimmerabile TRIAC / Dimmable TRIAC

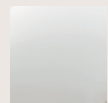
**FINITURE | FINISHES**

**Montatura | Frame**



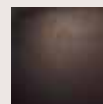
**ON**  
Ottone Naturale  
Natural Brass

**Vetro | Glass**

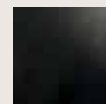


Borosilicato Bianco  
White Borosilicate

**CUSTOM SOLUTION**



Morocco



Grafene



RAL